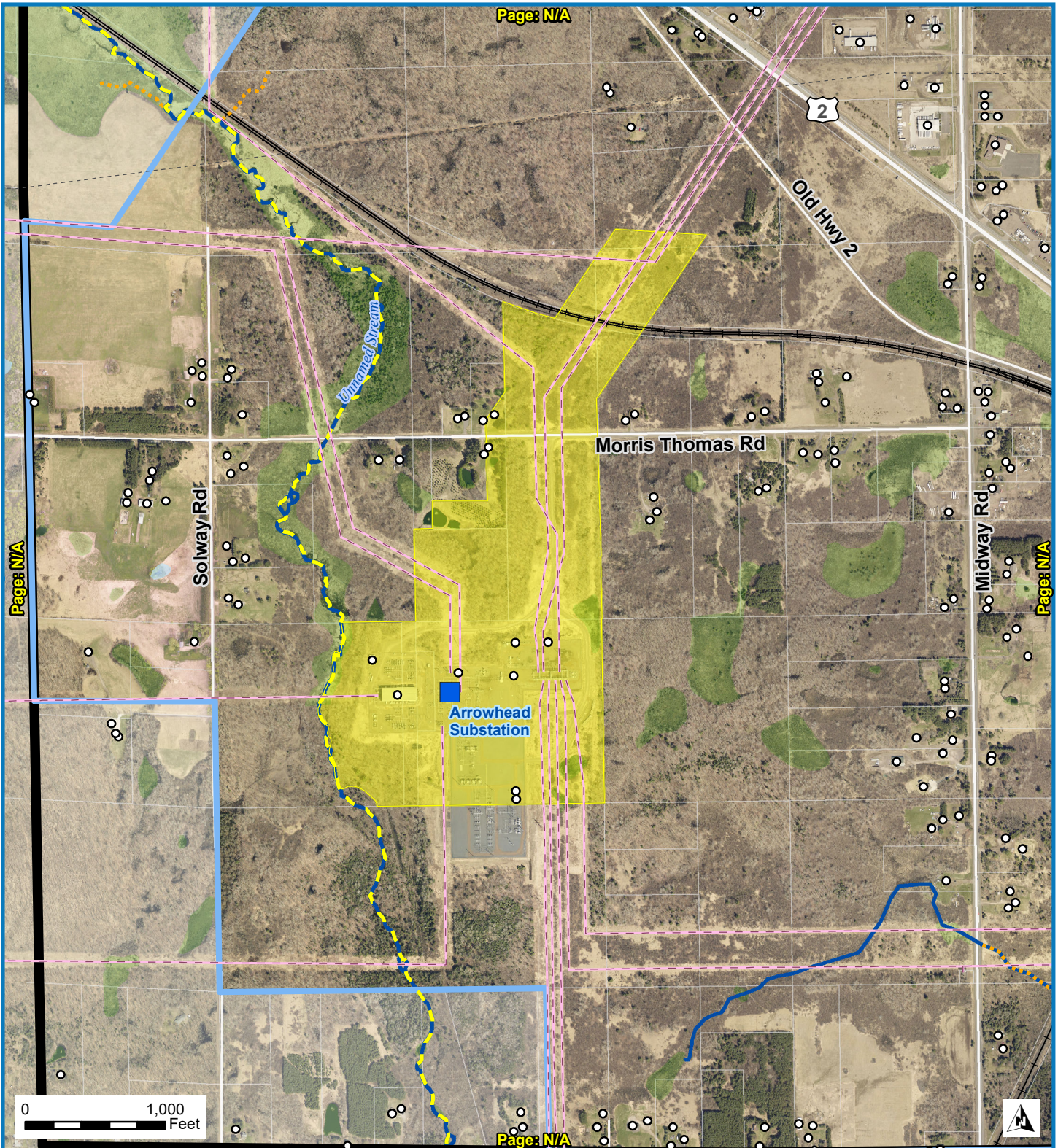
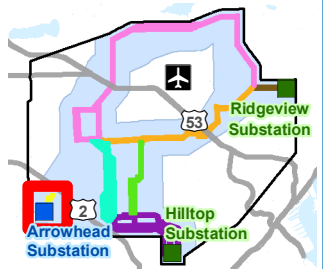


Page: N/A



This map provides preliminary Route Alternatives for the proposed project. These Route Alternatives were developed to collect information and feedback on potential route alternatives. This map does not represent the final route determination. The Minnesota Public Utilities Commission will make the final route determination after considering a variety of factors including human and environmental impacts and stakeholder and public input.

- | | | | |
|---------------------------|----------------------------|--|----------|
| Study Area | 115 kV Project Endpoint | NWJ Wetland Designated | Cemetery |
| Study Corridor | 230 kV Project Endpoint | Trout Stream | Church |
| Route Alternatives | Substation | Protected Tributary to Designated Trout Stream | Hospital |
| Segment A (Brown) | Existing Transmission Line | Property Line | School |
| Segment B1 (Pink) | Pipeline | MBS Biodiversity Significance | Park |
| Segment B2 (Orange) | Railroad | Existing Structure | |
| Segment C1 (Teal) | Waterbody | Airport | |
| Segment C2 (Green) | PWI Basin | | |
| Segment D (Purple) | PWI Watercourse | | |
| Segment E (Yellow) | | | |



DULUTH LOOP RELIABILITY PROJECT ROUTE ALTERNATIVES